

JANUARY 2012						
SUN	MON	TUES	WED	THURS	FRI	SAT
1	2	3 Trash	4	5 Paper Entire Town	6 Trash/Bulk	7
8	9	10 Trash	11	12 Co-Mingled Entire Town	13 Trash/Bulk	14
15	16 Christmas Trees	17 Trash	18	19 Paper Entire Town	20 Trash/Bulk	21
22 Christmas Trees	23 Trash	24 Freon By Appt.	25 Co-Mingled Entire Town	26 Trash/Bulk	27	28
29	30	31				

FEBRUARY 2012						
SUN	MON	TUES	WED	THURS	FRI	SAT
			1	2 Paper Entire Town Metal	3 Trash/Bulk	4
5	6	7 Trash	8	9 Co-Mingled Entire Town	10 Trash/Bulk	11
12	13	14 Trash	15	16 Paper Entire Town	17 Trash/Bulk	18
19	20	21 Trash	22 Co-Mingled Entire Town	23 Trash/Bulk	24	25
26	27	28 Trash	29 Freon By Appt.			

MARCH 2012						
SUN	MON	TUES	WED	THURS	FRI	SAT
				1 Paper Entire Town	2 Trash/Bulk	3
4	5	6 Trash	7	8 Co-Mingled Entire Town	9 Trash/Bulk	10
11	12	13 Trash	14	15 Paper Entire Town	16 Trash/Bulk	17
18	19	20 Trash	21 Co-Mingled Entire Town	22 Trash/Bulk	23	24
25	26	27 Trash	28 Freon By Appt.	29 Paper Entire Town	30 Trash/Bulk	31

APRIL 2012						
SUN	MON	TUES	WED	THURS	FRI	SAT
1	2 Yard Waste	3 Trash	4	5 Co-Mingled Entire Town	6 Trash/Bulk	7
8	9 Yard Waste	10 Trash	11	12 Paper Entire Town	13 Trash/Bulk	14
15	16 Yard Waste	17 Trash	18	19 Co-Mingled Entire Town	20 Trash/Bulk	21
22	23 Yard Waste	24 Trash	25 Freon By Appt.	26 Paper Entire Town	27 Trash/Bulk	28
29	30 Yard Waste					

*All garbage must be placed in tightly covered receptacles*

MAY 2012						
SUN	MON	TUES	WED	THURS	FRI	SAT
		1 Trash	2	3 Co-Mingled Entire Town Metal	4 Trash/Bulk	5
6	7 Yard Waste	8 Trash	9	10 Paper Entire Town	11 Trash/Bulk	12
13	14 Yard Waste	15 Trash	16	17 Co-Mingled Entire Town	18 Trash/Bulk	19
20	21 Yard Waste	22 Trash	23	24 Paper Entire Town	25 Trash/Bulk	26
27	28 Holiday No Pick-Up	29 Trash	30 Freon By Appt.	31 Co-Mingled Entire Town		

JUNE 2012						
SUN	MON	TUES	WED	THURS	FRI	SAT
					1 Trash/Bulk	2
3	4 Yard Waste	5 Trash	6	7 Paper Entire Town	8 Trash/Bulk	9
10	11 Yard Waste	12 Trash	13	14 Co-Mingled Entire Town	15 Trash/Bulk	16
17	18 Yard Waste	19 Trash	20	21 Paper Entire Town	22 Trash/Bulk	23
24	25 Yard Waste	26 Trash	27 Freon By Appt.	28 Co-Mingled Entire Town	29 Trash/Bulk	30

JULY 2012						
SUN	MON	TUES	WED	THURS	FRI	SAT
1	2 Yard Waste	3 Trash	4	5 Paper Entire Town	6 Trash/Bulk	7
8	9 Yard Waste	10 Trash	11	12 Co-Mingled Entire Town	13 Trash/Bulk	14
15	16 Yard Waste	17 Trash	18	19 Paper Entire Town	20 Trash/Bulk	21
22	23 Yard Waste	24 Trash	25 Freon By Appt.	26 Co-Mingled Entire Town	27 Trash/Bulk	28
29	30 Yard Waste	31 Trash				

AUGUST 2012						
SUN	MON	TUES	WED	THURS	FRI	SAT
			1	2 Paper Entire Town Metal	3 Trash/Bulk	4
5	6 Yard Waste	7 Trash	8	9 Co-Mingled Entire Town	10 Trash/Bulk	11
12	13 Yard Waste	14 Trash	15	16 Paper Entire Town	17 Trash/Bulk	18
19	20 Yard Waste	21 Trash	22	23 Co-Mingled Entire Town	24 Trash/Bulk	25
26	27 Yard Waste	28 Trash	29 Freon By Appt.	30 Paper Entire Town	31 Trash/Bulk	

*All garbage must be placed in tightly covered receptacles*

SEPTEMBER 2012						
SUN	MON	TUES	WED	THURS	FRI	SAT
						1
2	3 Yard Waste	4 Trash	5	6 Co-Mingled Entire Town	7 Trash/Bulk	8 Garage Sale
9 Garage Sale Rain Date	10 Holiday No Pick-Up	11 Trash	12	13 Paper Entire Town	14 Trash/Bulk	15
16	17 Yard Waste	18 Trash	19	20 Co-Mingled Entire Town	21 Trash/Bulk	22
23	24 Yard Waste	25 Trash	26 Freon By Appt.	27 Paper Entire Town	28 Trash/Bulk	29
30						

OCTOBER 2012						
SUN	MON	TUES	WED	THURS	FRI	SAT
	1 Yard Waste	2 Trash	3	4 Co-Mingled Entire Town	5 Trash/Bulk	6
7	8 Yard Waste	9 Trash	10	11 Paper Entire Town	12 Trash/Bulk	13
14	15 Yard Waste	16 Trash	17	18 Co-Mingled Entire Town	19 Trash/Bulk	20
21	22 Yard Waste	23 Trash	24	25 Paper Entire Town	26 Trash/Bulk	27
28	29 Yard Waste	30 Trash	31 Freon By Appt.			

NOVEMBER 2012						
SUN	MON	TUES	WED	THURS	FRI	SAT
				1 Co-Mingled Entire Town Metal	2 Trash/Bulk	3
4	5 Yard Waste	6 Trash	7	8 Paper Entire Town	9 Trash/Bulk	10
11	12 Yard Waste	13 Trash	14	15 Co-Mingled Entire Town	16 Trash/Bulk	17
18	19 Yard Waste	20 Trash	21	22 Holiday No Pick-Up	23 Trash/Bulk	24
25	26 Yard Waste	27 Trash	28 Freon By Appt.	29 Co-Mingled Entire Town	30 Trash/Bulk	

DECEMBER 2012						
SUN	MON	TUES	WED	THURS	FRI	SAT
						1
2	3 Yard Waste	4 Trash	5	6 Paper Entire Town	7 Trash/Bulk	8
9	10 Yard Waste	11 Trash	12	13 Co-Mingled Entire Town	14 Trash/Bulk	15
16	17	18 Trash	19	20 Paper Entire Town	21 Trash/Bulk	22
23	24	25 Trash	26 Freon By Appt.	27 Co-Mingled Entire Town	28 Trash/Bulk	29
30	31					

**CO-MINGLED** (Glass, Plastic Bottles, Aluminum & Steel)  
 Maximum container size 33 gallons. **DO NOT** place in plastic bags  
**PAPER** (Newspaper, Cardboard, Junk Mail, Telephone Books)



*Garbage must be placed in a tightly covered, water-tight receptacle.  
 Recycling will NOT be taken if placed in a plastic bag.  
 Plastic Toys are NOT recyclable.*

# Borough of Butler

**HEAVY BULK ITEMS** - such as sofas, mattresses, television sets, etc., will be picked up on Fridays only.

**CARPETING**, which is included in bulk, must be rolled, tied and in four foot sections no heavier than fifty pounds. It is suggested that you make arrangements with your carpet installer to haul away used carpet and padding if possible.

**HEAVY METALS** - **PLEASE NOTE CHANGE IN SCHEDULE:** February 2, May 3, August 2, and November 1, 2012.

**FREON APPLIANCES (refrigerators, freezers and air conditioners)** will be picked up the last Wednesday of every month **BY APPOINTMENT ONLY** - please call by Friday of the previous week at 973-838-7200, extension 219, or email at kbecker@butlerborough.com to be placed on the list.

**CONSTRUCTION MATERIAL** - Limit two 33 gallon containers - MUST be able to be lifted by one man - can be placed on the curb for pick-up on Fridays **ONLY**.

**ASPHALT ROOF SHINGLES** will not be collected curbside. They will be accepted at Mt. Olive and Parsippany Transfer Station. Information can be obtained by calling 973-808-9651 or 973-347-8106.

**YARD WASTE** (leaves, brush and grass clippings) must be recycled in biodegradable paper bags or trash receptacles no larger than 33 gallons. **PLASTIC BAGS ARE NOT ACCEPTABLE.** Brush must be in 4' lengths maximum and 4" in diameter no heavier than 25 pounds per bundle. All bundles must be tied. Biodegradable paper bags are available at Borough Hall Monday - Friday, 8:30 AM - 4:30 PM and the Butler Library on Saturdays - Cost: 3 bags for \$1.00.

**CHRISTMAS TREES** will be picked up on January 9th and 16th, 2012. They must be free of ornaments, tinsel, etc., and **NOT** be bagged.

**BATTERY RECYCLING/DISPOSAL IMPORTANT INFORMATION** - Alkaline Batteries no longer contain mercury and should be disposed of instead of recycled. Rechargeable batteries must be recycled and can be brought to Borough Hall for proper disposal.

**LITHIUM BATTERIES** are considered hazardous. For further information please call the MUA at 973-829-8006.

**USED MOTOR OIL** must be recycled. It is unlawful to dispose of waste oil in your regular garbage. Please contact Borough Hall for further information and proper disposal.

**TOWN WIDE GARAGE SALE** - September 8, 2012 - Rain Date: September 9, 2012.

**THE BOROUGH OF BUTLER IS NOW ACCEPTING ELECTRONIC MATERIAL**

- Computers and accessories
- Audio and video equipment
- TV's, VCR's and DVD's
- Cell Phones, Game Devices

All items can be brought to Borough Hall Monday - Friday from 9 AM - 4 PM

**PLEASE DO NOT DROP OFF ITEMS OUTSIDE OF THE BUILDING**

*The cooperation of all residents is needed to make our recycling program effective.*



As part of NJ's initiative to keep our water clean and plentiful, the Borough of Butler has adopted various ordinances to meet the requirements for clean water set by both State and Federal agencies. Please go to [www.butlerborough.com](http://www.butlerborough.com) and read the Stormwater Management Page for more details.

By sharing the responsibility and making small, easy changes in our daily lives, we can keep common pollutants out of stormwater. It all adds up to cleaner water and it saves the high cost of cleaning it up once it's dirty.

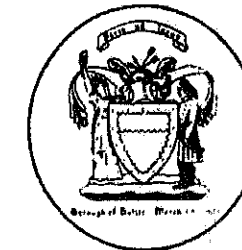
Pollution on streets, parking lots and lawns is washed into storm drains, then directly to our drinking water supplies and the ocean and lakes our children play in. Fertilizer, oil, pesticides, detergents, pet waste, grass clippings, etc., end up in our water.

Stormwater pollution is one of New Jersey's greatest threats to clean and plentiful water, and that's why we ALL need to do something about it.

## STORMWATER POLLUTION AFFECTS US ALL

**Borough of Butler**

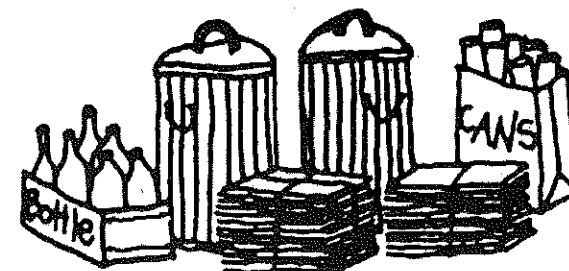
One Ace Road  
Butler, N.J. 07405



BULK RATE  
U.S. Postage  
**PAID**  
Permit # 535  
Wayne, New Jersey

**U.S. POSTAL PATRON  
BUTLER, NEW JERSEY 07405**

**- 2012 Recycling Newsletter -**



- Printed on Recycled Paper -

